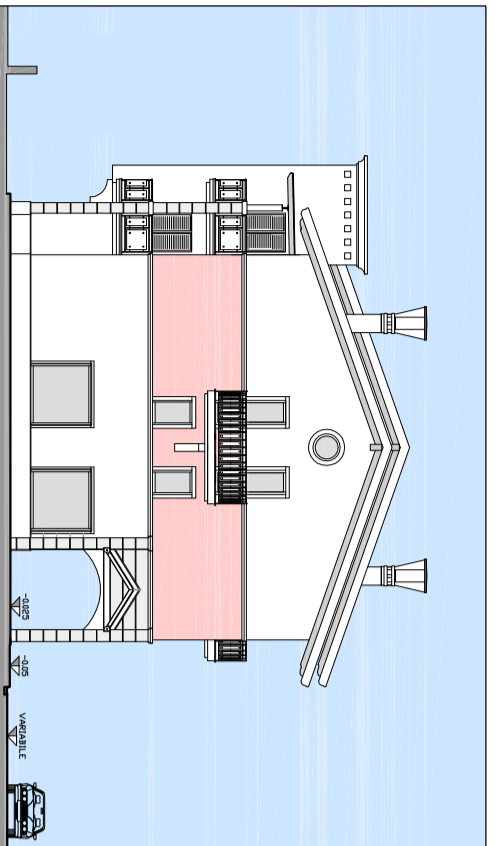
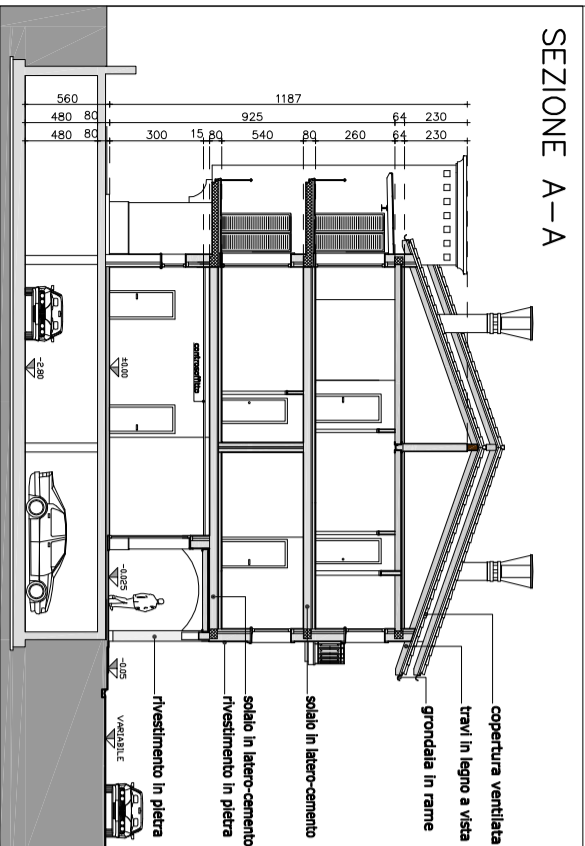


**PROGETTO DI UN EDIFICIO  
RESIDENZIALE E COMMERCIALE  
"RESIDENZA GHERARDINI"**

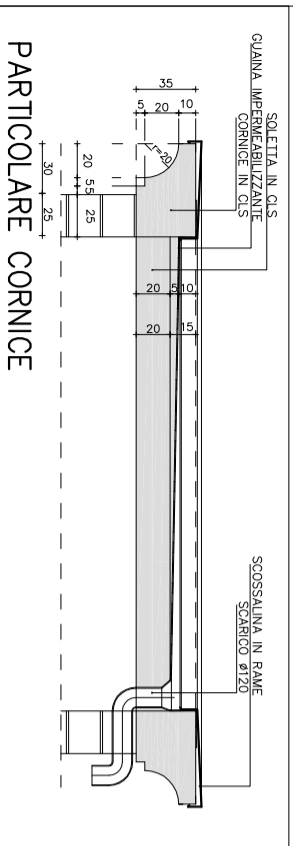
C.E. n°42 DEL 23/03/2004



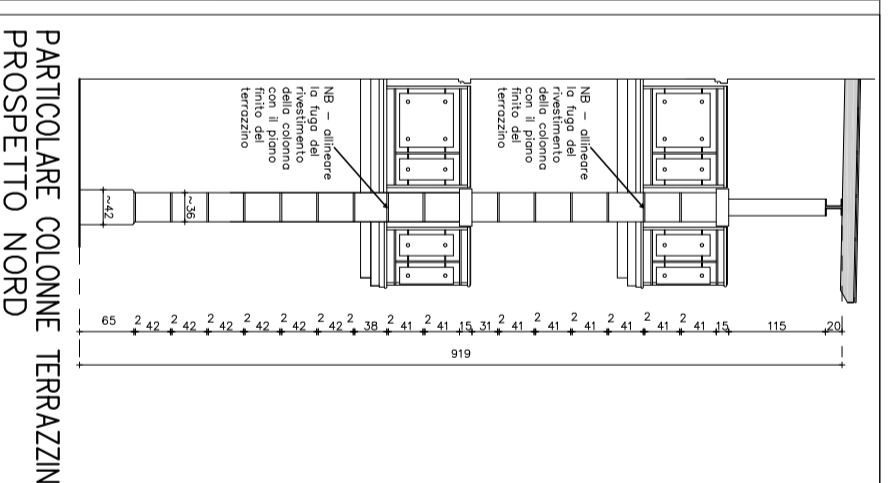
PROSPETTO OVEST



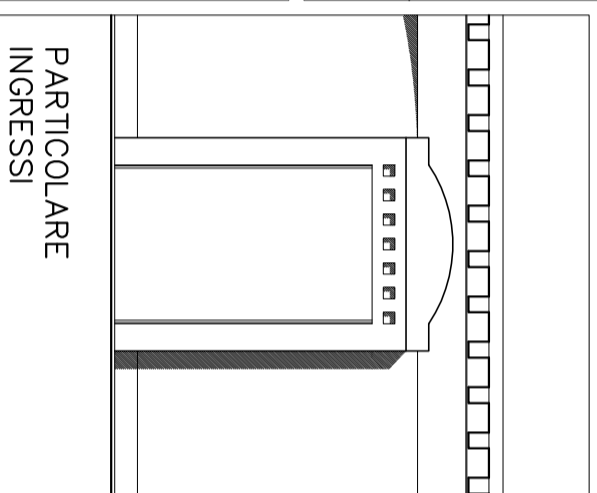
SEZIONE A-A



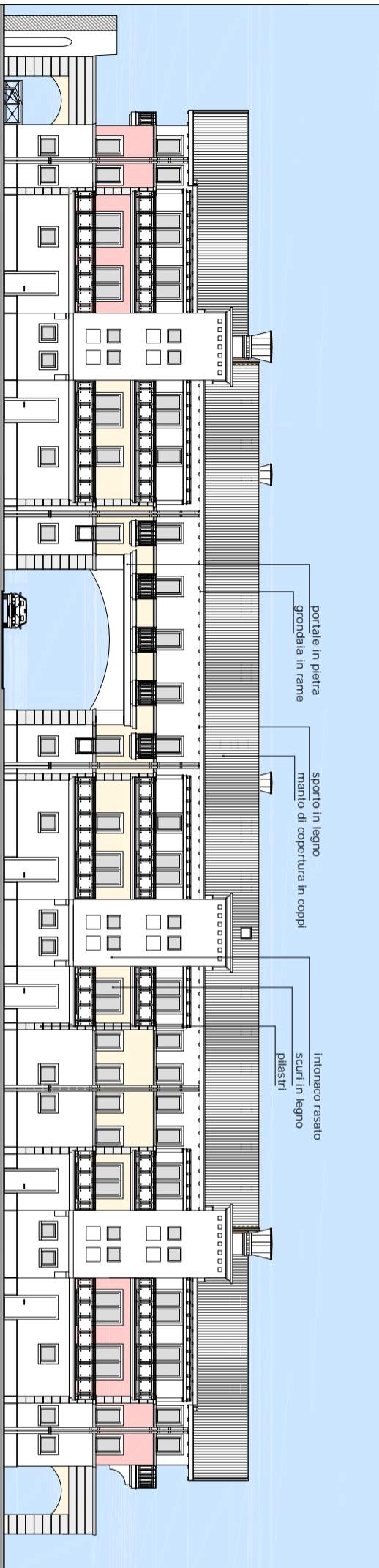
PARTICOLARE CORNICE



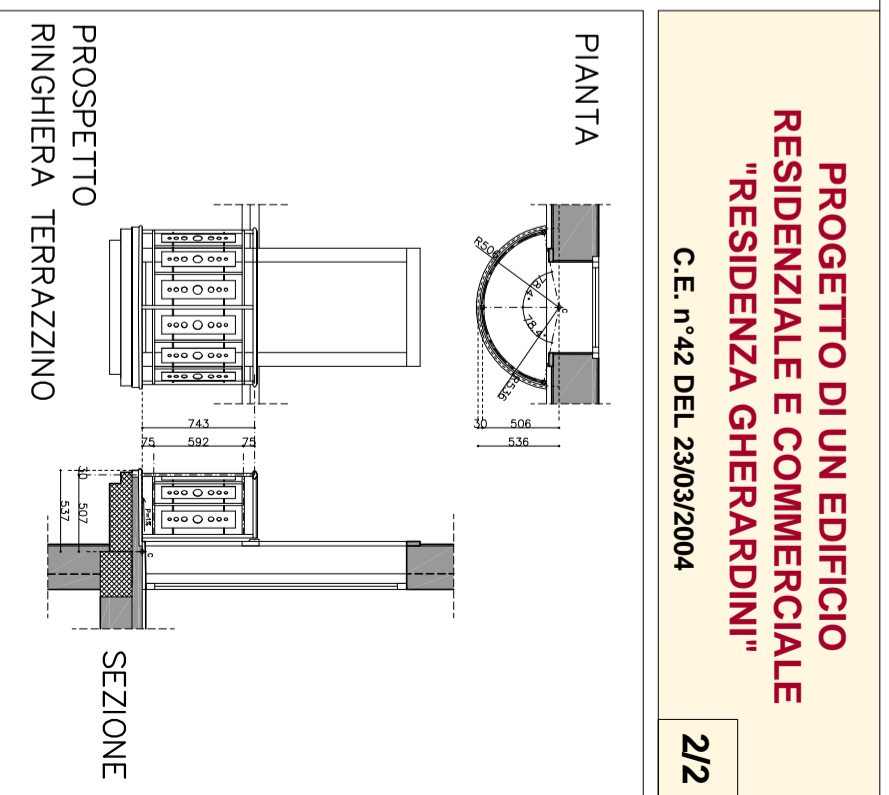
PARTICOLARE COLONNE TERRAZZINI  
PROSPETTO NORD



PARTICOLARE INGRESSI

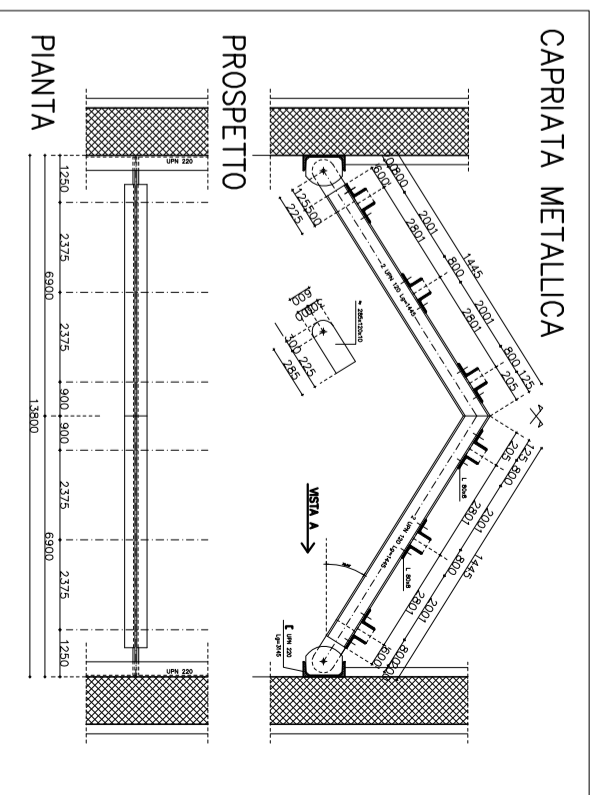


PROSPETTO NORD



PIANTA

PROSPETTO RINGHIERA TERRAZZINO  
SEZIONE



CAPPRIATA METALLICA

PIANTA

PROSPETTO

